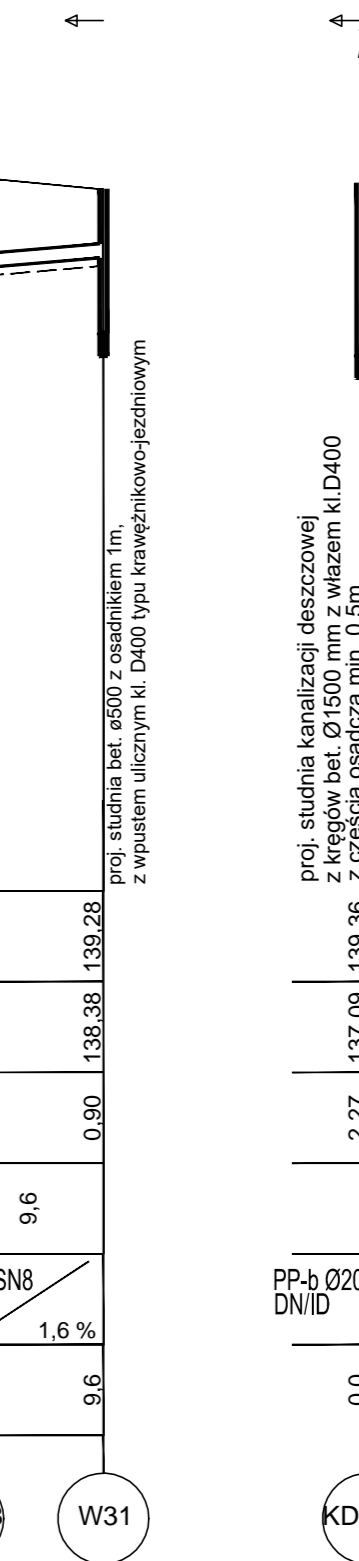
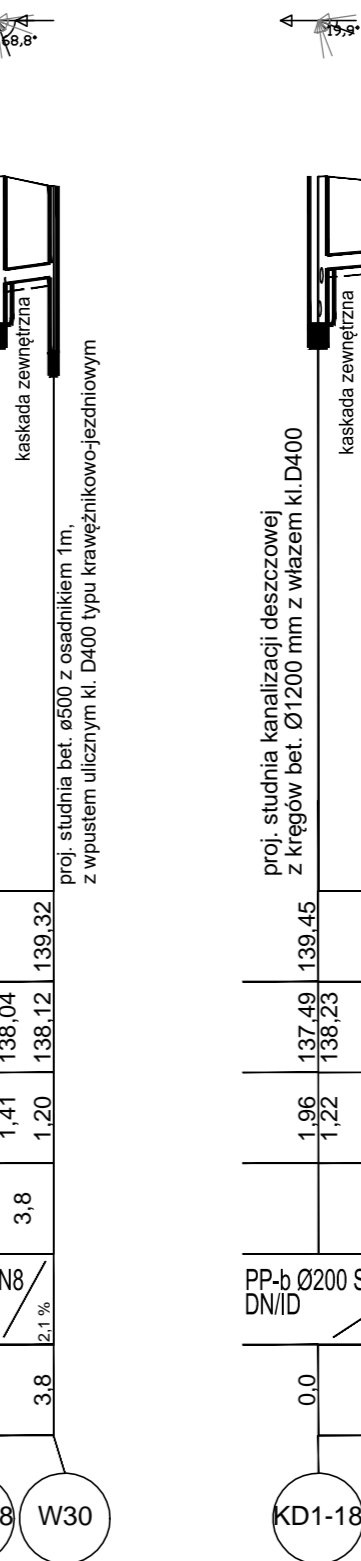
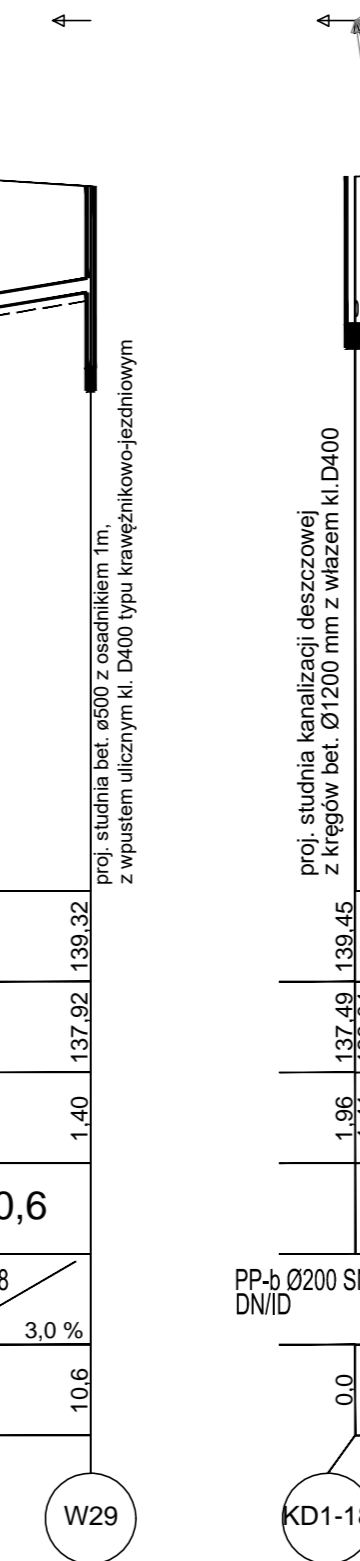
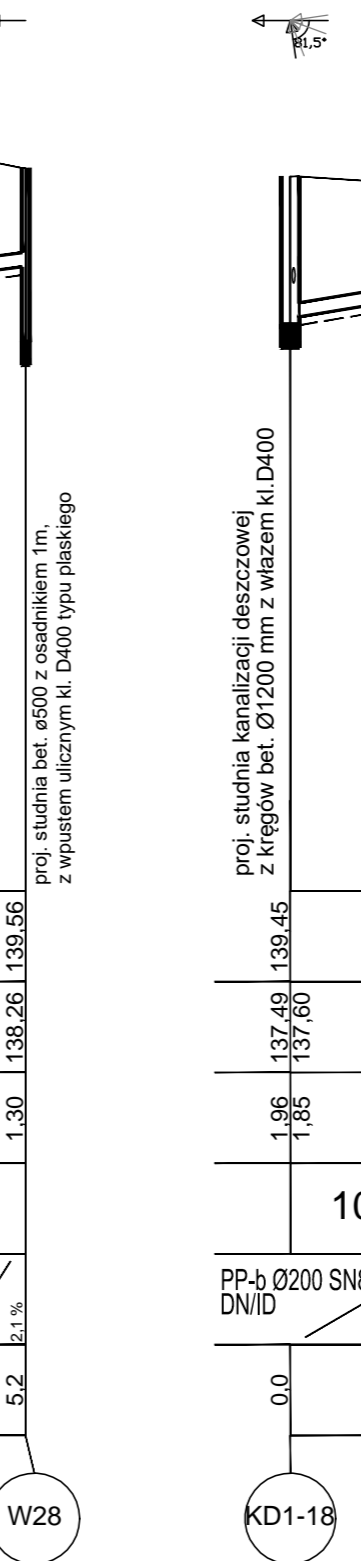
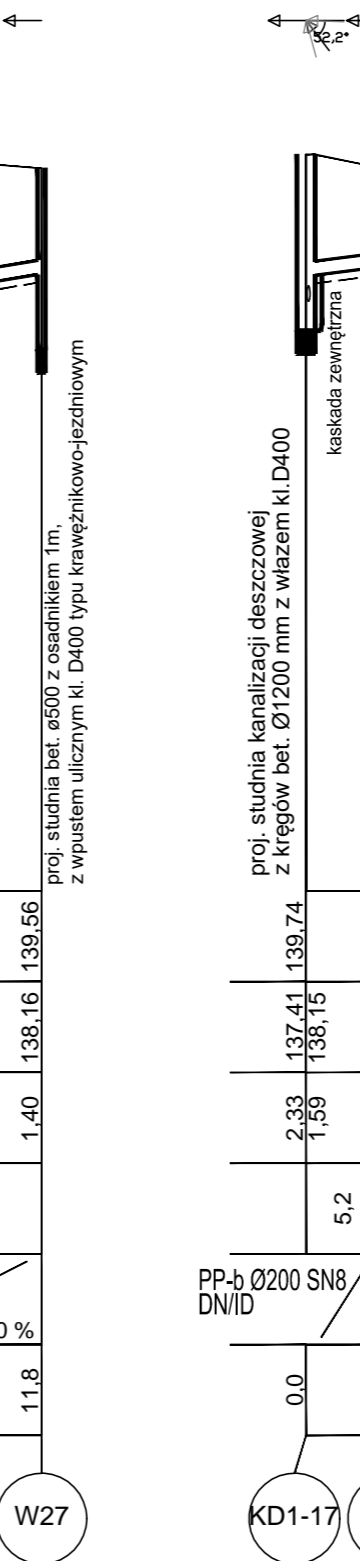
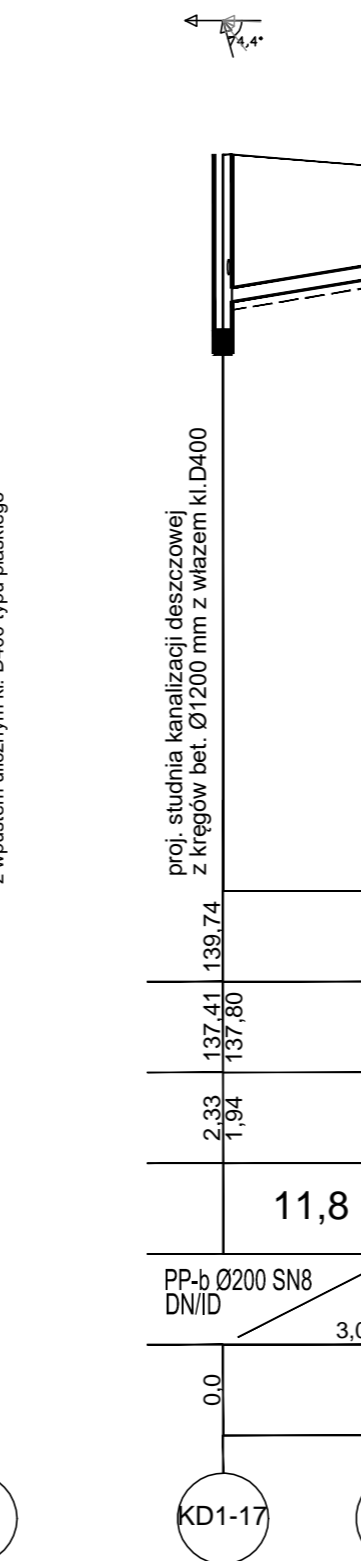
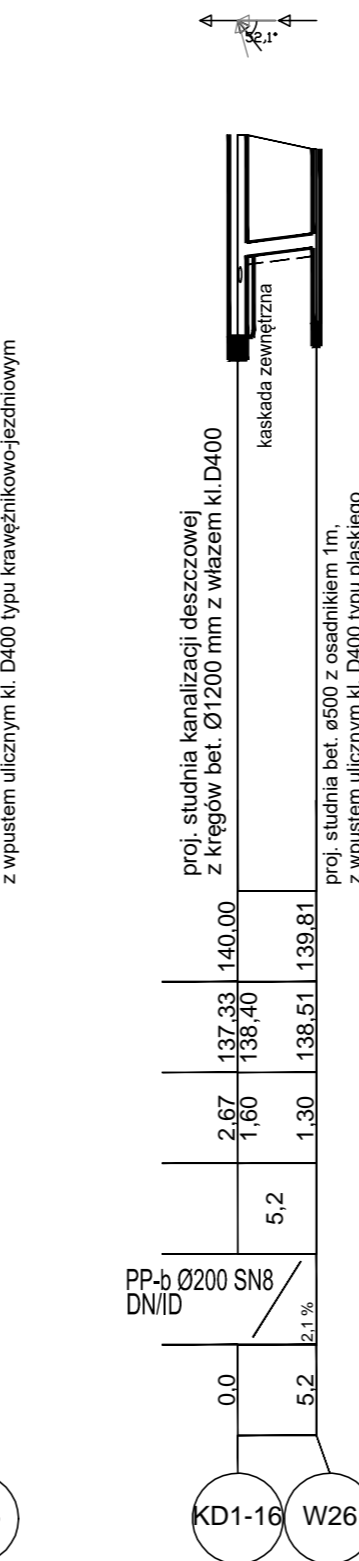
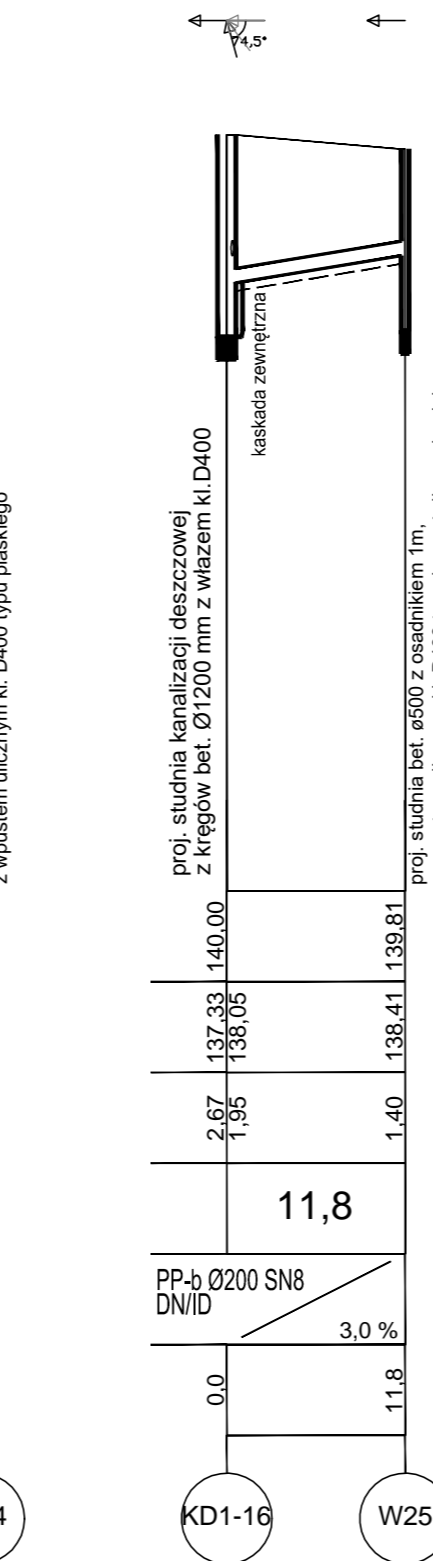
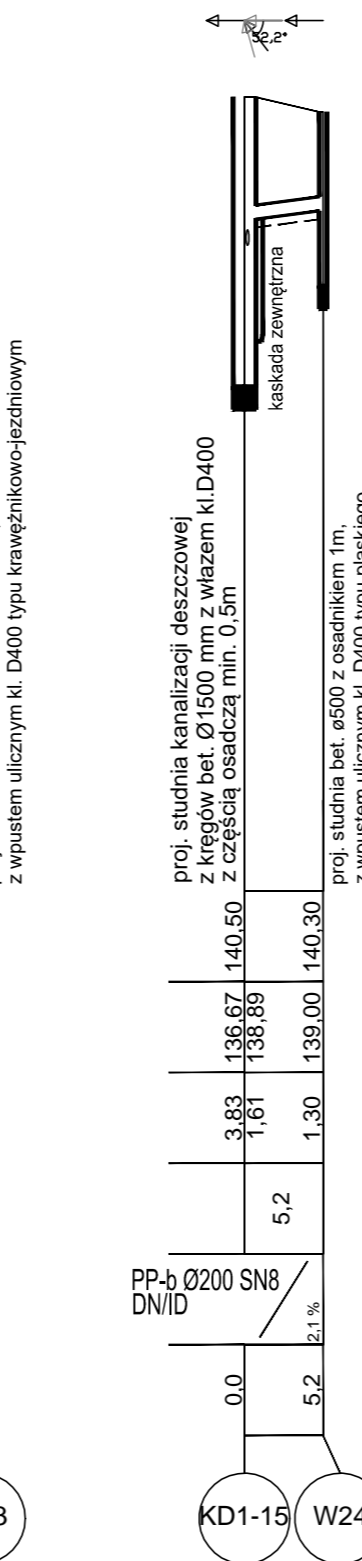
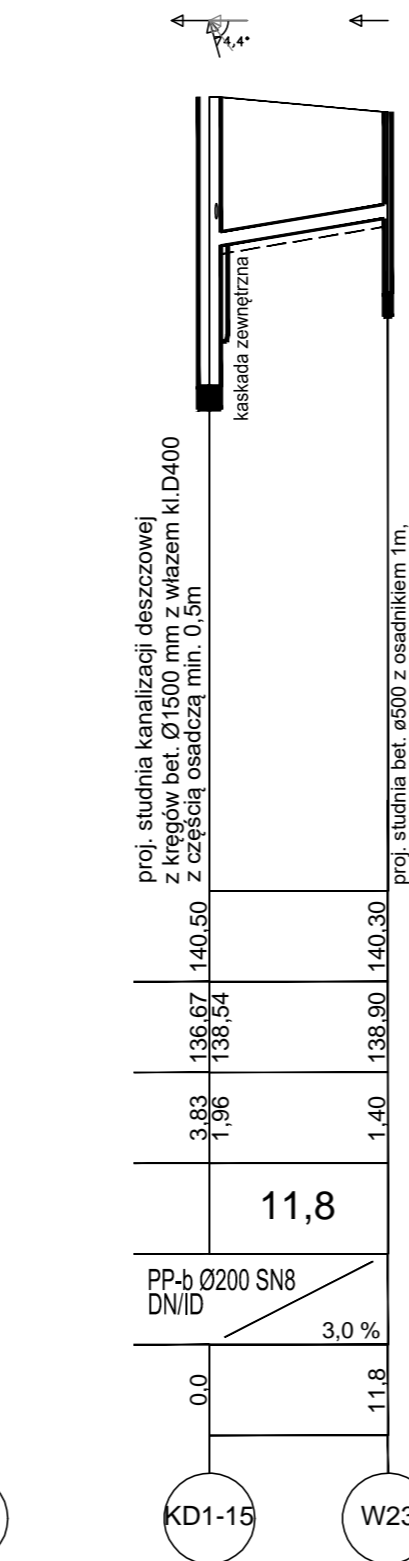
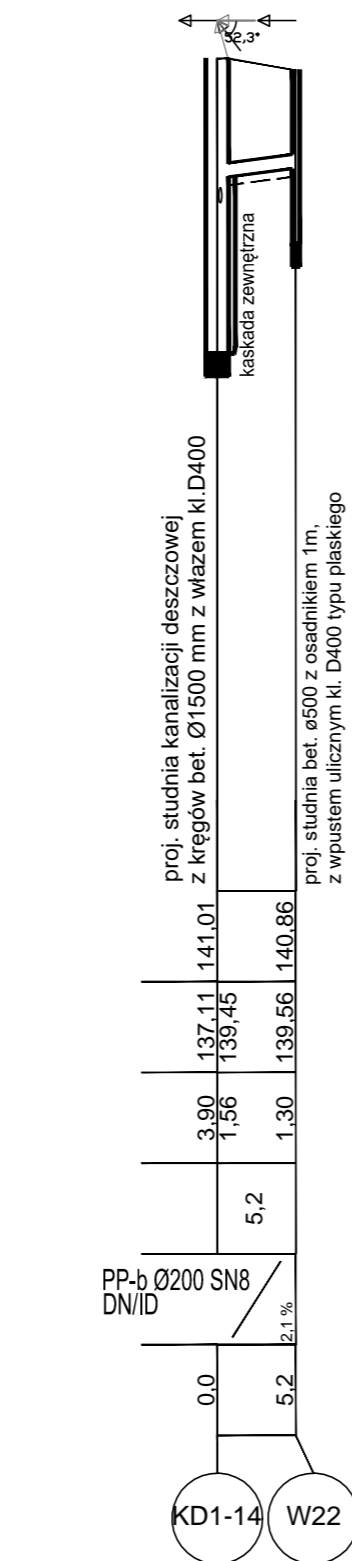
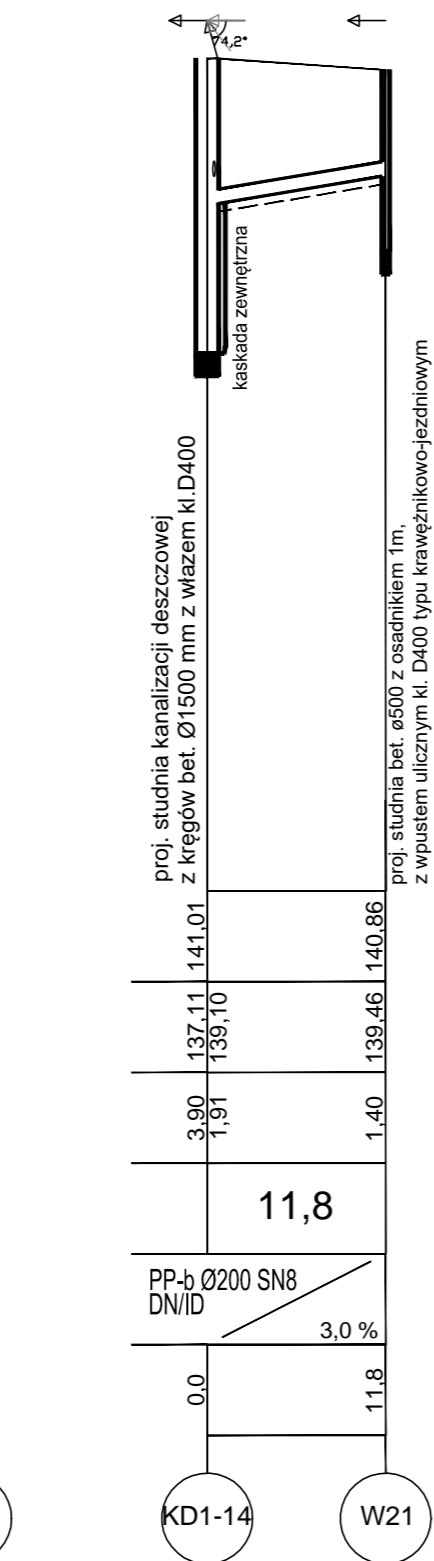
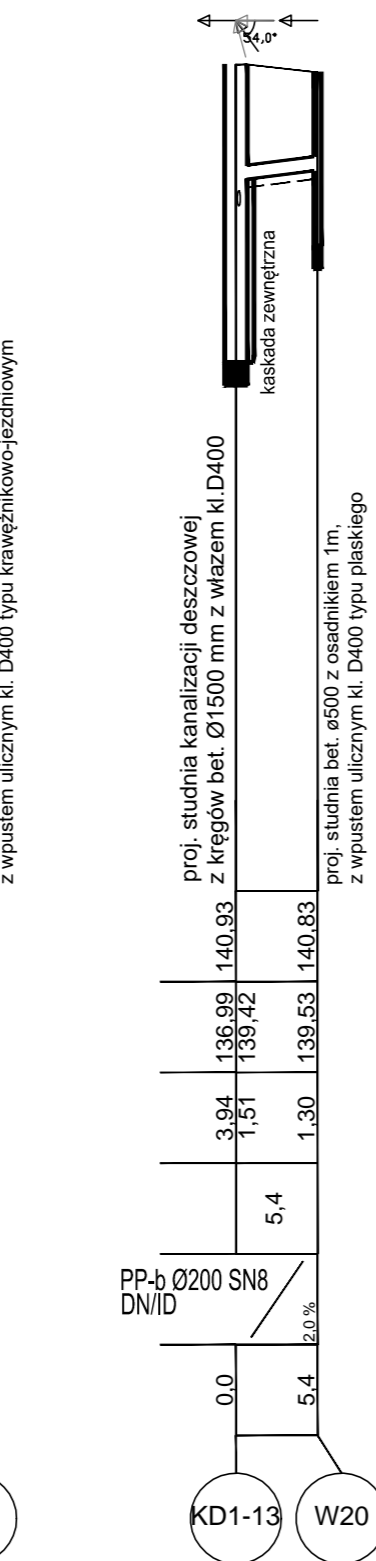
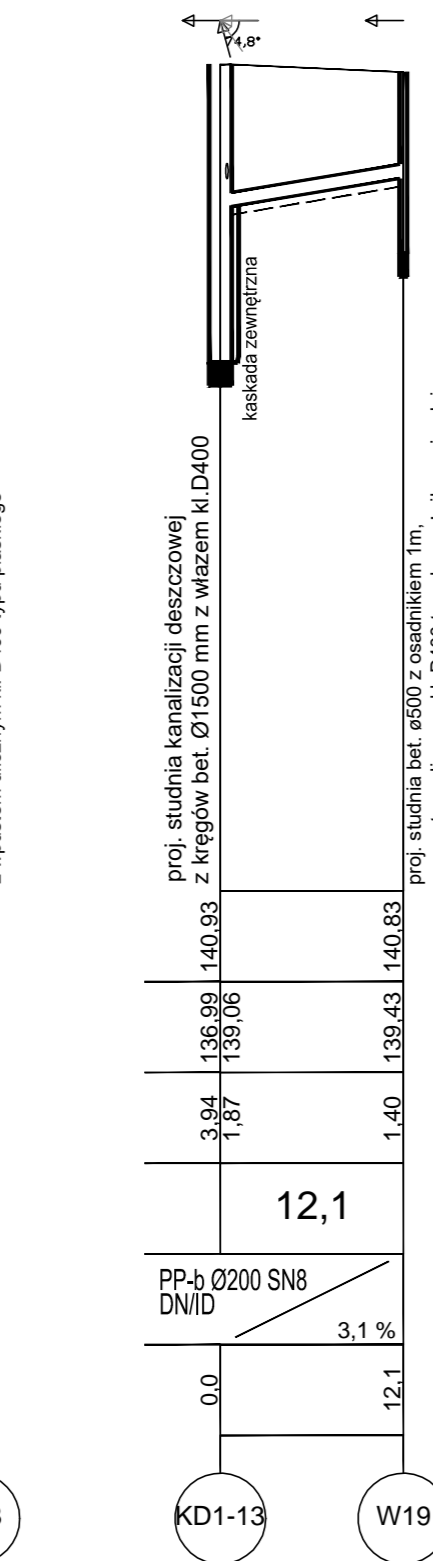
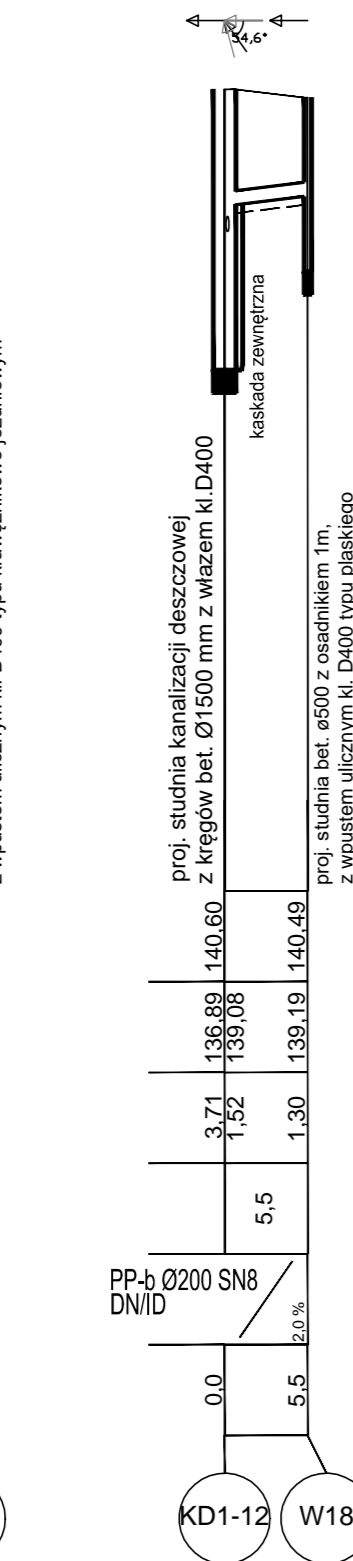
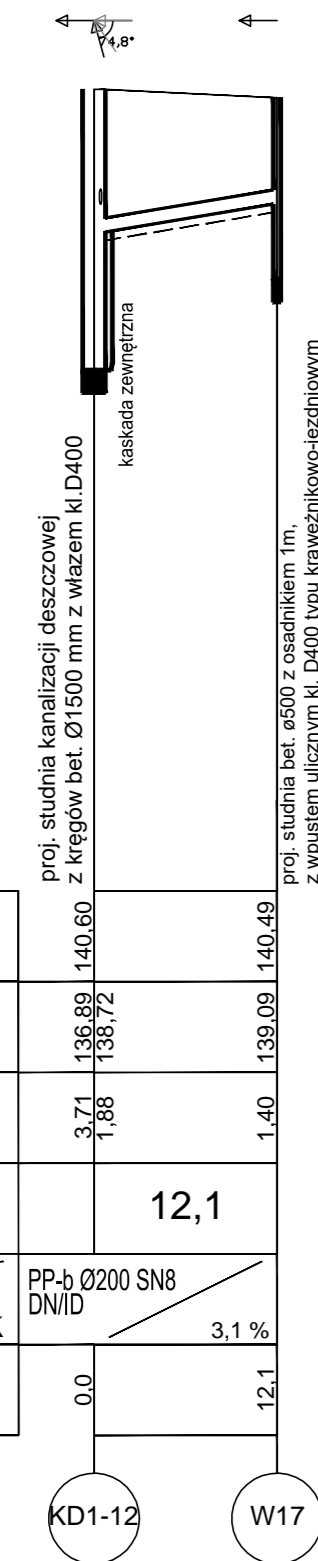


Poziom porównawczy 130,00 m n.p.m.

Rzędna terenu projektowanego	
Rzędna dna kanału	
Zagłębienie dna kanału [m]	
Odległości [m]	12,1
Średnice, materiał	PP-b Ø200 SN8 DN/ID
Długość trasy [m]	Spadek 3,1%



Drogowskaz

Stadium: P.W.

Skala: 1:100/500

Nazwa rysunku: **Profile podłużne przykanalików kanalizacji deszczowej**

Opis: Budowa kanalizacji deszczowej z przykanalikami w ramach budowy drogi od strony zachodniej miasta Wysokie Mazowieckie od km 1+114,95 do km 2+078,10.

M. Gwizdowski, A. Sosnowski
ul. Elewatorska 13/22, 15-620 Białystok
tel. (085) 652 06 80, e-mail: drogowskaz-sc@o2.pl

Rysunek nr: **S8.**

Data: **05.2021**

BRANŻA SANITARNA

Opracował:	Projek:	Sprawdził:
mgr inż. Tomasz Lukowski PDL/0141/POOS/13		mgr inż. Wojciech Golaszewski PDL/0140/POOS/10